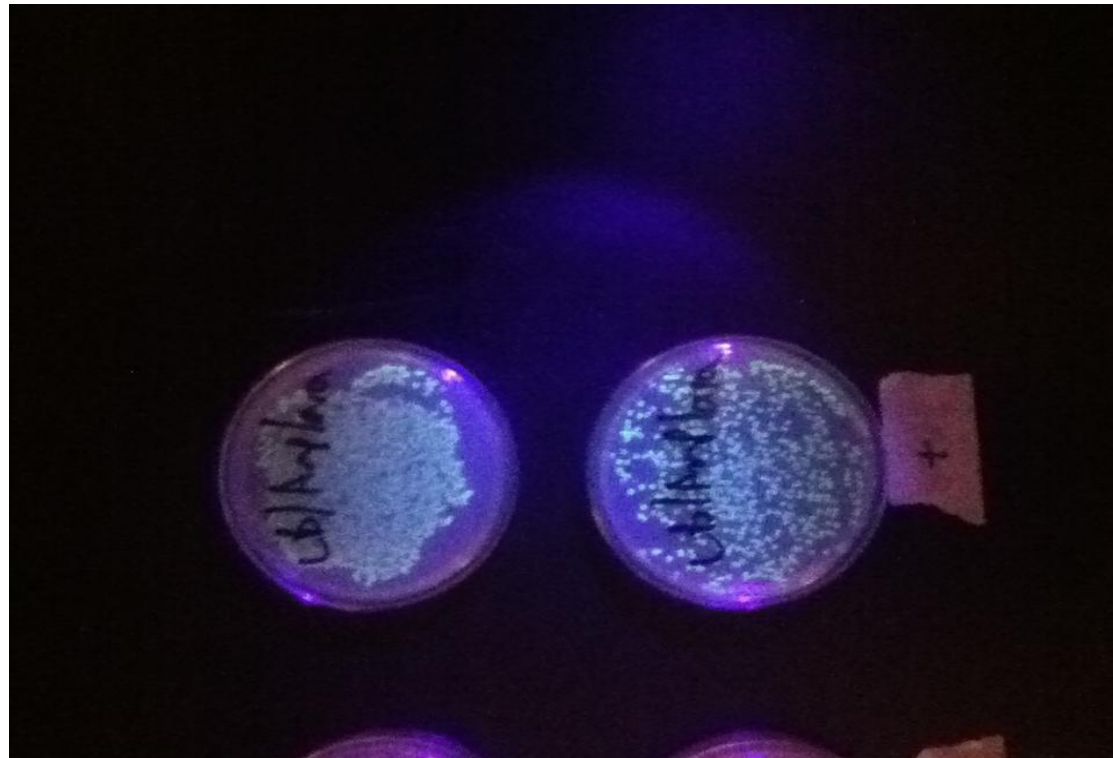


Inquiry into Transformation

Laboratory Report Requirements

April 2014



Pre-Lab Requirements

- **Title: Inquiry into Transformation**
 - Date: April 23, 2014
- **ABSTRACT-Lab Objectives:** *include those listed in either lab packet*
- **ABSTRACT-Relevant Terminology:** N/A
- **INTRODUCTION-Background Info:** *include a thorough description of transformation*
- **INTRODUCTION-Purpose:** *in your own words, what are we attempting to achieve by completing this lab?*
- **INTRODUCTION- Hypothesis:** *Think about what you should see upon completion of this lab; IF you do what, THEN you should observe...?*

- **MATERIALS & PROCEDURES:** *include what is provided in the lab manual you received that is specific for the pGLO/GFP experiment (You were provided this by Mrs. Talley the day of the experiment.)*

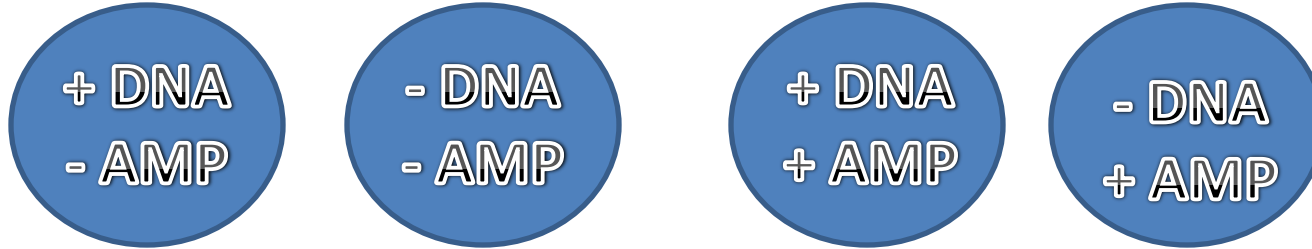
The lab manual you will need to use for your materials/procedures, as well as post-lab analysis, is titled:

Transformation with Green Flourescent Protein (GFP) Exp. 223

RESULTS/DATA:

- **DATA:** Please look at page 16. Complete steps #5 and #6 when doing the following:

LABELED *diagrams of your petri dishes upon completion of the lab.*



Drawings should be as accurate as possible. Draw **WHAT YOU SEE**, not what you would expect.

- **Determination of Transformation Efficiency:**

You will need to use page 17 of the lab manual as a guide to perform the calculations required here. Follow steps #1-2 and show your calculations with your diagrams as data. You may “eyeball” or estimate your colonies.

- DISCUSSIONS & CONCLUSIONS:
 - Results summarized
 - Errors identified: *include at least 2*
 - Results compared to hypothesis
 - Conclusions stated: *include why you did or did not see the results you would expect; REMEMBER to back up your conclusions using content background knowledge*
- LAB QUESTIONS: *Include answers to the questions on page 18 of the lab manual; #1-5 please.*

Lab reports are due:

Thursday, May 1st

Expect a LAB QUIZ over this lab